



2021-2022

## **Dear Galion Families & Caregivers,**

Galion City Schools is in the midst of a period of great transition, one that will not only build off the successes of the previous school year, but one that will create the foundation for future successes as well. We are grateful for the hard work, dedication and devotion of so many of our teachers, staff, students and families who all united for the cause of providing our children with a safe and healthy school year during a most challenging time. We would also like to thank our community members who have done so much to support our students in innumerable ways. The successes of the 2020-2021 school year would not have been possible without the generosity of time, care and attention given by those who have long supported our schools and our students.

Moving forward, Galion Schools is looking at opening the 2021-2022 school year with an all-in, five-days-a-week schedule. We will continue to work with the Galion City Health Department, the Ohio Department of Health and the CDC to ensure we are providing a learning environment that continues the tremendous momentum we've built over the last 18 months. We have made great progress against the spread of COVID-19 in Crawford County, and the Galion City School District acknowledges the importance of adhering to best practices so we can ensure a continued safe return to school.

We are excited by the promise of the 2021-2022 school year and are grateful for the position we are in as we transition to a year of great possibilities. We must take all we've learned from past experiences and use that knowledge to continue seeking great achievement. Because we were able to work together on the successes of the past, we head into the next academic calendar with strength, confidence and appreciation.

We will continue to update our Galion City Schools community, and should you have any questions, please do not hesitate to contact district staff.

I thank you for your flexibility, attention and patience as we continue toward greatness. We are truly living our district motto of "Believe, Achieve, Succeed."

**Jennifer Allerdig**, Superintendent  
*Galion City Schools*

Galion City Schools has identified the following as guiding principles of our Return and Reset Plan:

**Health & Safety**

**Achievement**

**Wellness**

Galion City Schools trusts that no matter the environment, all students can

**Believe • Achieve • Succeed**

Galion City Schools' mission is to...

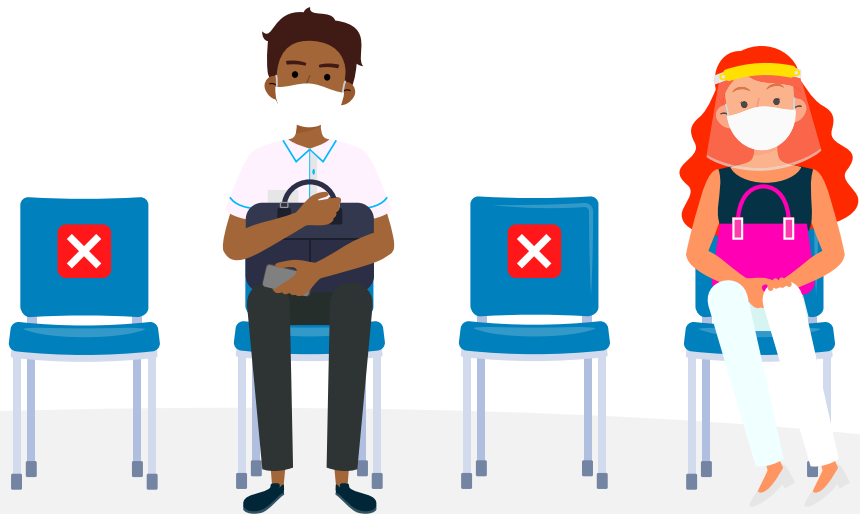
Prepare students with a rigorous education that enables them to be contributing members of our community. We provide a safe, respectful environment that cultivates leaders of tomorrow. Our guiding principle is Believe in yourself, Achieve your greatest potential, and Succeed in all aspects of life.

# Facial Coverings Policy

***Galion City Schools will follow all protocol and guidelines as set forth by the Ohio Department of Health, CDC, and Galion City Health Department. Under current guidance, the practice of wearing a facial covering is recommended but not required.***

- The district will continue to provide facial coverings for students and staff who chose to wear one.
  - » There may be situations in which staff and/or students may be required to wear a facial covering.
    - The CDC's most recent order states that passengers and drivers must wear a facial covering on school buses.
    - If sick, and the illness is not due to COVID-19, staying home is recommended; however, if in attendance at school, the use of a facial covering is recommended to protect yourself and others.

**Masks must be free of writing, words and statements.**



## Feasibility and Adaptions

- As recognized by the Centers for Disease Control and Prevention (CDC) “the wearing of cloth face coverings may not be possible in every situation or for some people. In some situations, wearing a cloth face covering may exacerbate a physical or mental health condition, lead to a medical emergency, or introduce significant safety concerns.”

# Contact Tracing/Quarantine

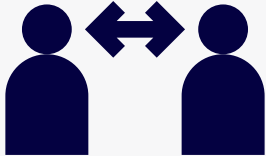
## ***When a Student/Staff Member is Diagnosed with COVID-19***

- The Galion City Health Department epidemiology team will communicate with confirmed COVID-19 cases/guardians, school leaders and any close contacts identified. This is known as contact tracing.
- Close contacts of a COVID-19 case are typically persons who spent more than 15 minutes in close proximity (within 6 feet) of the positive case without any PPE and/or more than one protective barrier in place. Close contacts will be determined on a case-by-case basis in collaboration with the Galion City Health Department.
- Those that test positive for COVID-19 or live in the same household as an individual that has tested positive for COVID-19, may be required to quarantine.
- All confirmed COVID-19 cases will be isolated, monitored daily and released by the Galion City Health Department if they are a Galion City resident. If the person is not a Galion resident, Galion City Health Department will communicate with the associated health district.
- Vaccinated students/staff are not required to quarantine.

## ***Student Health Issues Not Related to COVID-19***

- Utilize an abundance of caution. If any symptoms are apparent, child(ren) should remain at home.
- Students must be fever free for 24 hours and show improvement in all symptoms for 24 hours.
- To return to school, symptoms must be reviewed by school personnel, unless cleared by a health professional prior to their return.

# Galion City Schools Restart Need to Know



## **Social Distancing**

1. Classrooms will be spaced to the fullest extent possible at all grade levels.
2. Controlled traffic flow in hallways.
3. Easily recognizable signage specifying guidelines and expectations will be displayed.



## **Deep Cleaning**

1. All buildings will be disinfected each day.
2. Continually disinfect common areas based on a set schedule.
3. Students in grades 4-12 to assist in cleaning and disinfecting their own personal space or desk area throughout the school day.



## **Non-Essential Visitors & Volunteers**

1. Limit visits to school as much as possible.
2. Follow posted guidelines and read all instructional signage.
3. Must conduct self-wellness check, including temperature, prior to entering school buildings or grounds.



## **Hand Washing/Sanitation**

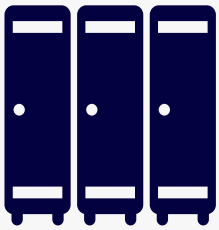
1. Students and staff must sanitize hands (provided) upon entering school buses, buildings and classrooms.
2. Wash hands throughout the school day at regular intervals.
3. Sanitizing breaks provided at regular intervals.
4. District to provide hand sanitizing stations in all buildings and on buses.



## **Athletics**

1. Athletic administration and participation guidelines will be set by guidance issued jointly from the Governor's Office and the OHSAA. Updates and changes will align with county risk levels.
2. Safety protocols (distancing, sanitation, etc.) will be enforced to the extent possible given the individual sport or activity.
3. All district health policies will tightly align with athletic participation requirements.

# Galion City Schools Restart Need to Know



## **Student Lockers, Hallways & Common Areas**

1. Controlled traffic flow in hallways.
2. Locker usage schedule to be provided – goal is to minimize locker usage.
3. Water fountains will be inaccessible – students should bring a clear water bottle to school daily. Water bottle refilling stations will be available.
4. Students should refrain from congregating in hallways – staff members to monitor.



## **Transportation**

1. Maintain appropriate physical distance while at bus stops.
2. Students must sanitize hands (provided) upon entering bus.
3. Face coverings are required.
4. Seats will be assigned.
5. Two (2) students per seat.
6. Families will be grouped together.



## **Cafeteria/Food Service**

1. Students must sanitize hands (provided) upon entering cafeteria.
2. If bringing a packed lunch, report immediately to designated seating area.
3. Utilize student ID to pay for lunches – touchless system implemented.
4. Assist in cleaning personal area upon dismissal.
5. When applicable, all take-home meals must go home with students (students may not eat at school or on bus).



## **Wellness Checks**

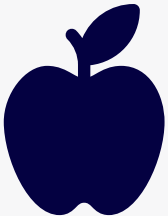
1. Students are required to remain at home with any illness and/or symptoms.
2. Students perform self-monitoring for symptoms throughout the school day.
3. Students should immediately inform an adult when experiencing symptoms.
4. The district will provide a wellness checklist for family use prior to school. Temperatures 100°F and above must stay home.
5. The district has a supply of free, take-home COVID-19 tests to share with students, staff and families as needed.
6. If sick, and the illness is not due to COVID-19, staying home is still recommended.

# Galion City Schools Restart Need to Know



## ***Vaccination efforts***

1. In conjunction with the Galion City Health Department, all Galion staff members were offered the option of being vaccinated in February and March.
2. A makeup vaccination date was also offered to staff who missed one or more of the originally scheduled dates.
3. An on-site vaccination clinic was held for students age(s) 16-18 during the month of April.
4. Galion City Health Department has held several vaccination clinics for students and community members age(s) 12+.
5. Additional vaccination clinics may be scheduled during the 2021-2022 school year in cooperation with the Galion City Health Department.



## ***Accommodations***

1. All reasonable efforts will be made to meet the social-emotional, physical and educational needs of Galion students.
2. The district will remain compliant in servicing students with disabilities based on their individual plans (504, IEP).
3. Any student requiring modifications to the guidelines, as outlined within this plan, should provide documentation of the request, in writing, to building administration for consideration.
4. Targeted interventions, in collaboration with families and educators, will be implemented based on individual student need.



# Responsibilities and Expectations for In-Person Learning



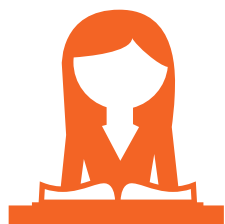
## PARENT/CAREGIVER EXPECTATIONS

- Daily temperature and symptom checks prior to school
- Keep children at home when experiencing symptoms
- Thoroughly wash student's hands prior to bus ride or transport to school
- Provide students with a face covering or face shield to wear while at school (See Facial Coverings Policy)
- Contact the school immediately if student has tested positive or lives in a household with a confirmed positive



## STUDENT EXPECTATIONS

- Communicate at first onset of feeling unwell
- Maintain maximum social distance while in school
- Sanitize hands before entering buses, cafeteria and classroom
- Follow all directional signs in hallways
- Students in grades 4-12 to assist in cleaning and disinfecting their own personal space or desk area throughout the school day
- Follow all facial covering procedures and rules



## STAFF MEMBER EXPECTATIONS

- Ensure and maintain classroom setup that provides maximum distance possible
- Provide specific directions and expectations for buses, cafeteria, classrooms, hallways, offices, restrooms, etc.
- Ensure students maintain maximum distance whenever possible
- Minimize shared classroom materials
- Strictly adhere to district policies for buses, cafeteria, classrooms, hallways, offices, restrooms, etc.
- Disinfect buses, cafeteria, classrooms, hallways, offices, restrooms, etc. nightly
- Guarantee provision of all necessary cleaning supplies
- Monitor students for potential symptoms
- Prohibit all non-essential visitors
- Provide special education services when applicable
- Provide mental health counseling and wellness services when applicable
- Model patience and professionalism with students and parents

# Galion

CITY SCHOOL DISTRICT

*Believe · Achieve · Succeed*

## 2021-2022 School Times

Galion High School:

**7:25 a.m. - 1:57 p.m.**

Galion Middle School:

**7:25 a.m. - 1:55 p.m.**

Galion Intermediate School:

**8:05 a.m. - 3:05 p.m.**

Galion Primary School:

**8:40 a.m. - 3:40 p.m.**

# Galion's Commitment

*How our district will continue to ensure continuity of services.*

## Achievement

- Before and after programming (ROAR) for grades K-8 and afterschool tutoring for GHS students.
- Extended school year and summer programming offered to all students within Galion to address learning gaps.
- Diagnostic assessments will continue for students in grades PK-5 and will be implemented in grades 6-12 for the 2021-2022 school year.
  - » Diagnostic assessments allow staff to determine students' individual strengths, weaknesses, knowledge and skills prior to instruction and identifies areas where additional support is needed.
- Increased intervention opportunities have been previously established for students in grades PK-5 and will be in place for students in grades 6-12 for the 2021-2022 school year.
- Continued professional development for staff to provide high-quality instruction that is aligned with Ohio's Learning Standards.

## Health and Safety

- Work collaboratively with families, students, staff and the local health department to establish and implement structured protocols to ensure an environment that is as safe as possible.
- Invest in PPE and equipment that supports our efforts to ensure a healthy and safe environment.

## Wellness

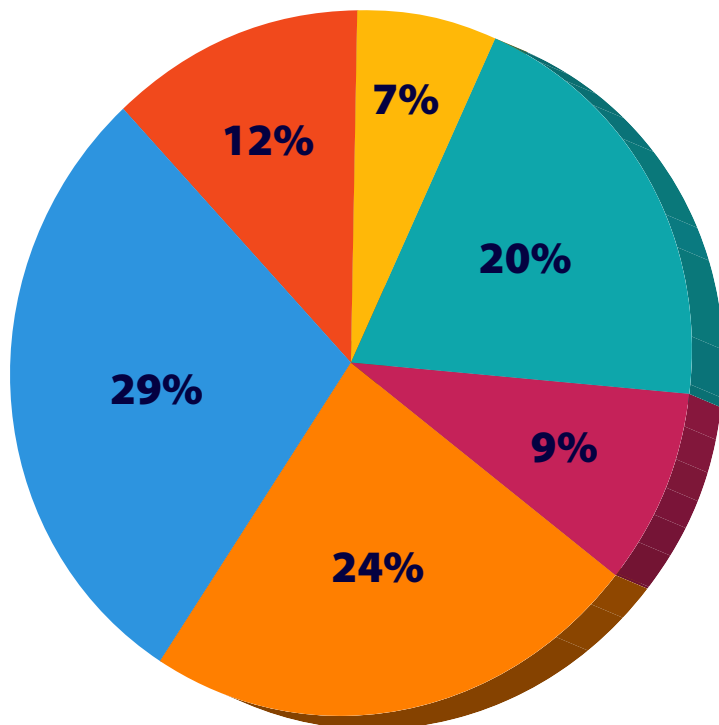
- Continue to assist students and families with easy access to counselors, nurses, social workers, administrators and family resource support.
- Increased collaboration with community agencies to support the social, emotional and mental health of students and staff.
- Invest in resources and equipment to increase physical activity and opportunities on campus.



**We commit to maintaining collaboration and open dialogue with our community stakeholders during the 2021-2022 school year.**

# Resource Allocation Breakdown

In response to the pandemic, Congress set aside approximately \$13.2 billion of the \$30.75 billion allotted to the Education Stabilization Fund through the Coronavirus Aid Relief, and Economic Security (CARES) Act for the Elementary and Secondary School Emergency Relief Fund (ESSER Fund). The Department awarded these grants to State educational agencies (SEAs) for the purpose of providing local educational agencies (LEAs), including charter schools that are LEAs, with emergency relief funds to address the impact that COVID-19 has had, and continues to have, on elementary and secondary education across the Nation.



## 29% Mental Health/Wellness & Emotional/Social Wellbeing

- Increased student engagement/mental health opportunities
  - » Interactive activities; Lu Playground; new, inclusive playground at Intermediate school to accommodate all students; drive-thru style events - trick or treat, graduation parade, district pep rally, etc.; and safe field trip and other educational experiences for students
- Expanded food delivery program to ensure all students in neighborhoods had access to proper nutrition during the 20-21 year, including summer months
- Increased access to counselors, social workers and family engagement specialists

## 24% Targeted Staff Training

- Training and support for staff to grow their knowledge base and improve their job skills to become more effective in the workplace
- Assessments in reading and math

## 20% Curriculum/Learning Loss

- Updated curriculum and programing/extracurricular opportunities to meet the demands of the 21st century and address learning loss

## 12% Capital Equipment

- Classroom modifications for increased student and staff safety
- Updated technology to enrich learning, collaboration, creativity and engagement
  - » New iPad purchases, staff computer upgrades, keyboards for grades 6-8, Clevertouch TVs throughout buildings
- Future purchase of an additional bus for increased transportation efficiency and optimized travel time

## 9% Connectivity

- Increased WiFi accessibility and strength, creating greater connectivity across the district
- New communication programs/partnerships to increase district communication with stakeholders

## 7% "Safe Return"

- High-quality sanitization products and protocols dedicated to maintaining a safe learning environment
- PPE for staff and students to mitigate the spread of COVID-19 and other illnesses

# Adapt and Adjust

As a reminder, plans are based on CURRENT knowledge shared with the public. We will continue to re-evaluate based on evolving conditions; data about the status of the pandemic; feedback from staff, students, and staff throughout the year and recommendations and guidance from public health officials and the scientific community.



*Believe • Achieve • Succeed*